



### **Accessibility Notes for UNIT/PITT Gallery and Garden Spaces:**

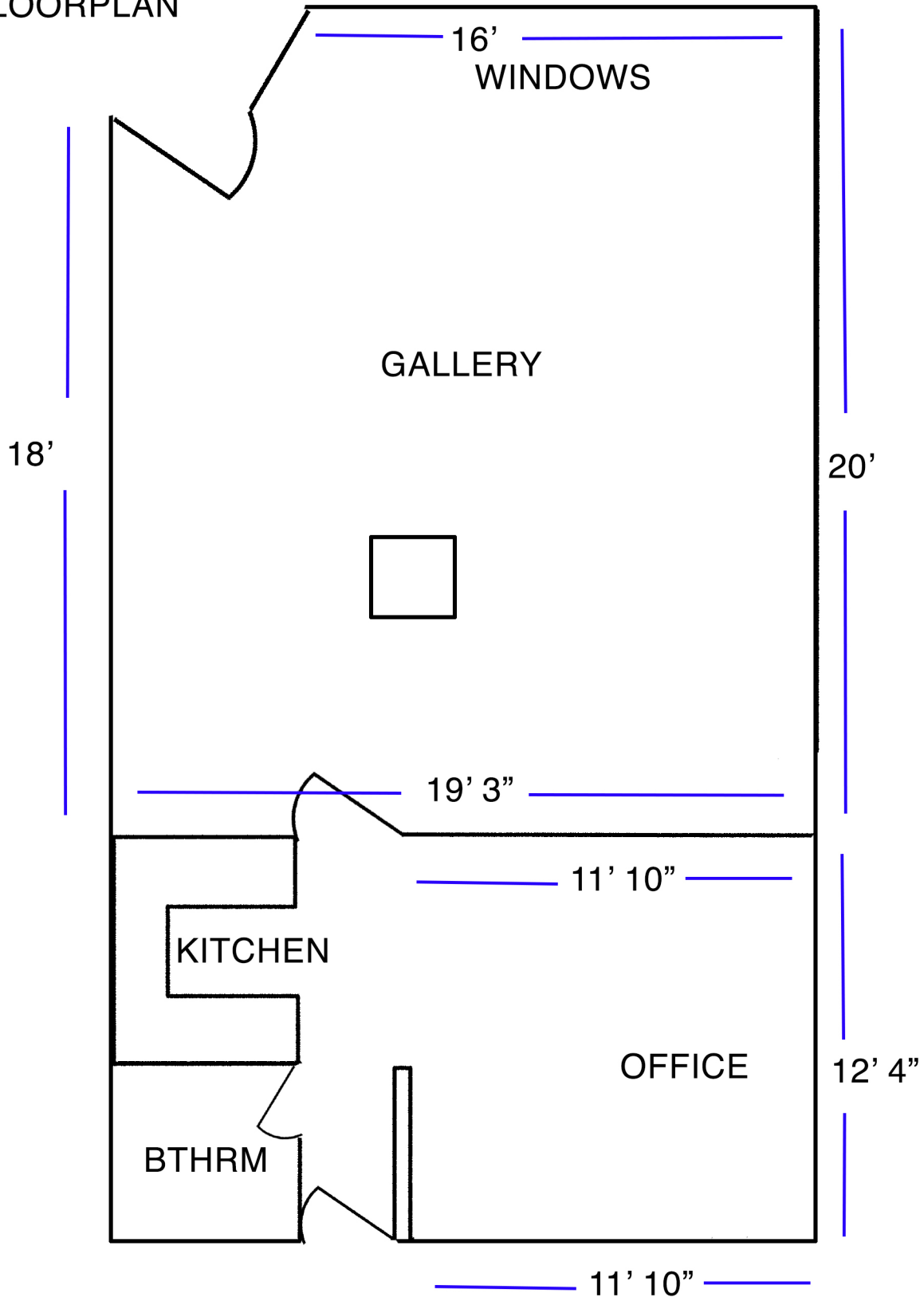
- A number of chairs are provided for events and workshops, please communicate with gallery staff and volunteers if you would like a seat to be reserved.
- The gallery is a street-level, storefront space which is accessible from West 4th Ave, with a doorway over 3-feet wide.
- The doorway between the gallery and office/kitchen space is over 3-feet wide.
- The garden is accessible from the alley between West 4th and West 5th Avenues off of Bayswater Street. The ground is slightly uneven, and is covered in various grasses and plants. There are 4 stairs down and 1 step up into the office/kitchen area, with a doorway over 3 feet wide.
- The doorway to the bathroom off the office is over 2 feet 11 inches wide, with 1 step up. The self contained gender neutral bathroom is not wheelchair accessible; however, we will do our best to accommodate the needs of our guests as they arise.
- Please get in touch for more detailed accessibility information if needed.

### **Transit Notes:**

- Bus routes 2, 44 and 84 are accessible within 2 blocks east of the gallery.
- The 84 is the closest connection to Vancouver's Skytrain (Olympic Village station).
- The 99 B-Line is 5 blocks south of the gallery, two blocks east, at MacDonald and Broadway, which connects to Broadway City Hall Skytrain station.
- There is free parking available along West 4th Avenue, West 5th Avenue, and Bayswater Street.
- Detailed transit information is available by request.

UNIT/PITT  
2954 WEST 4TH AVE  
VANCOUVER, BC  
V6K 1R4  
DRAFT FLOORPLAN

FRONT - WEST 4TH AVE



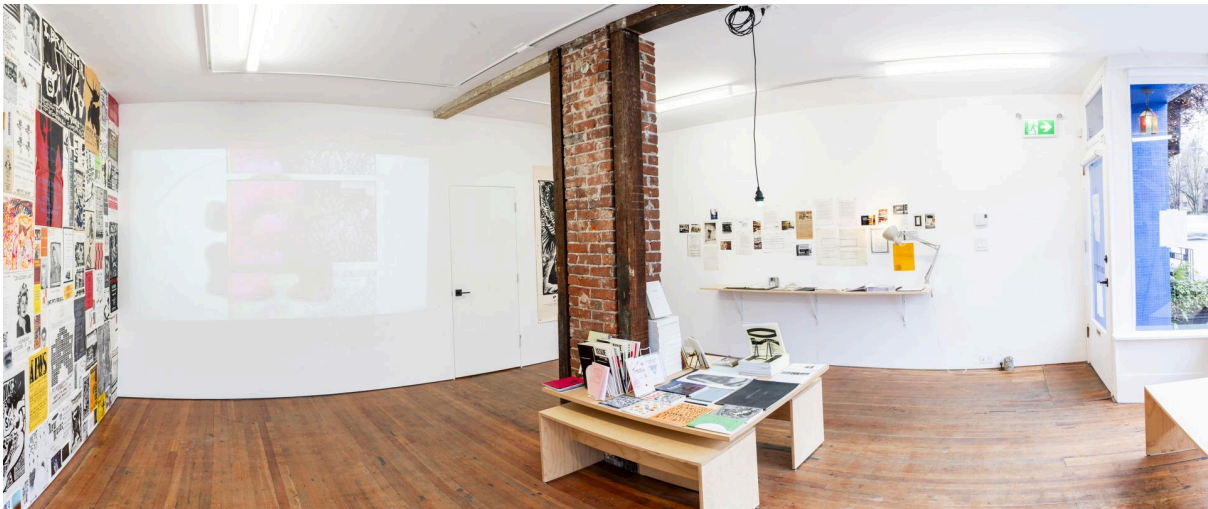
# Facade



# Front entrance sidewalk



# Gallery Space



Office



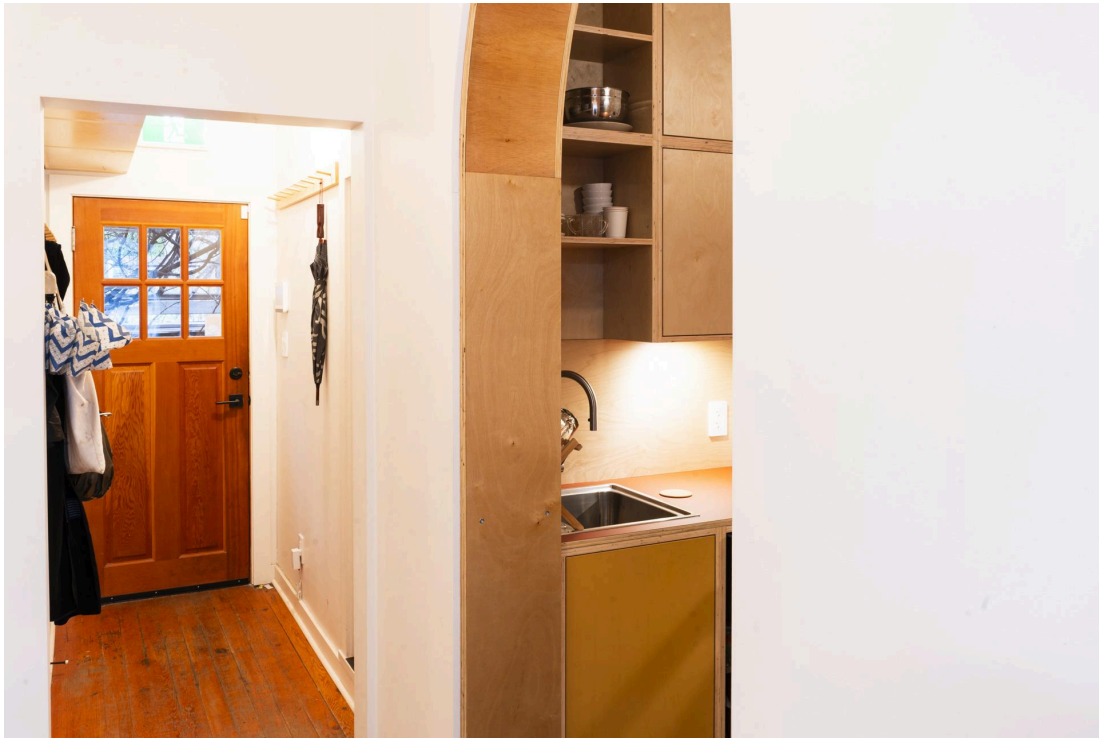
Kitchen



# Washroom



Hallway to backdoor



Covered back entry landing



Walkway to garden and pergola



Garden and back gate

